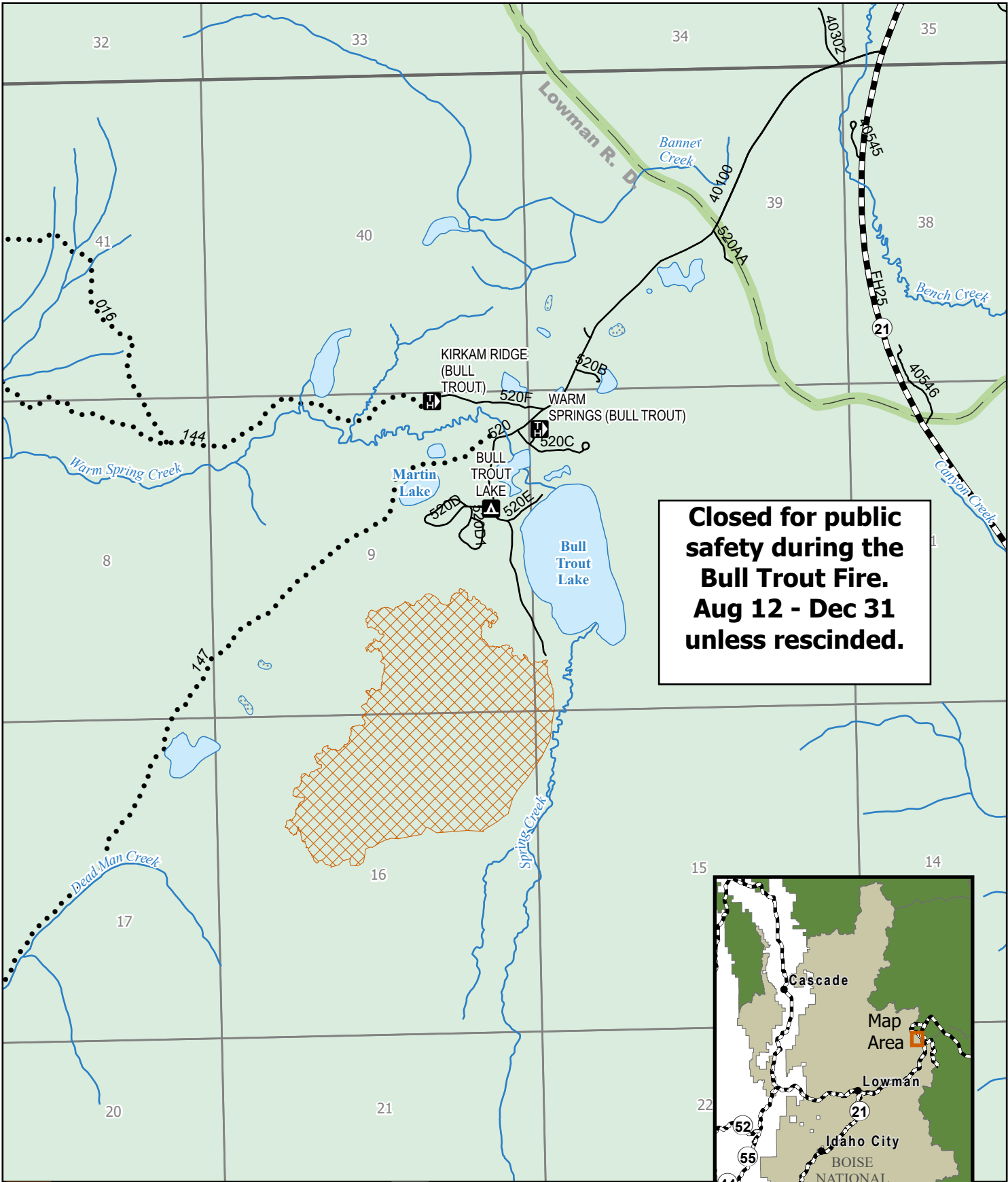




Boise National Forest

Lowman Ranger District
Bull Trout Fire Closure
Order Number - 0402-05-93

The U.S. Department of Agriculture, Forest Service uses the most current and complete data available. GIS data and product accuracy may vary. They may be developed from sources of differing accuracy, accurate only at certain scales, based on modeling or interpretation, incomplete while being revised or created, etc. Using GIS products for purposes other than those for which they were created, may yield inaccurate or misleading results.



Closed for public safety during the Bull Trout Fire. Aug 12 - Dec 31 unless rescinded.

- Described Area
- Campground
- Trailhead
- Perennial Stream/River
- Highway 21
- Roads
- Motorized Trail
- FS Ownership
- Forest Boundary

0 0.13 0.25 0.5 Miles

